

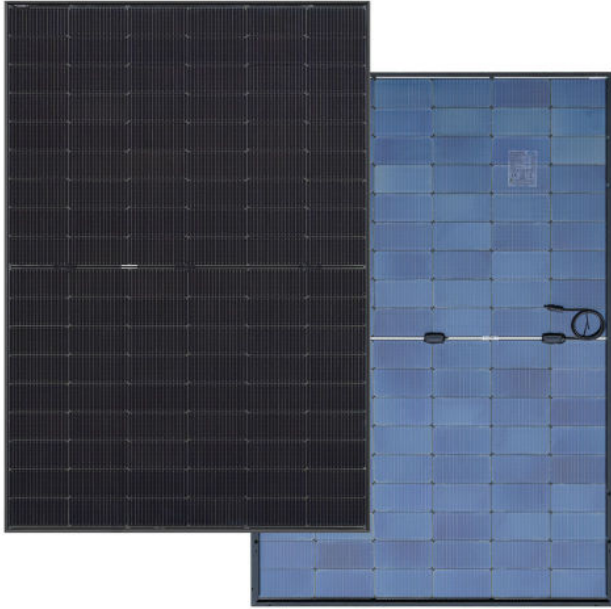
HT-60-18X(ND)-F Double Glass Black Frame

High Efficiency ZERO LID and TOPCON cell with Half-cut Technology

Big Size: Cell 182mm × 91mm Monocrystalline

465W / 470W

475W / 480W / 485W



- Module Efficiency
22.4%
- No. of Cells
120(6 × 20)
- Weight
26.0kg
- Dimensions
1909mm × 1134mm × 30mm



10-30% Additional Power Generation

10-30% additional power generation comparing with conventional P-type module



ZERO LID (Light Induced Degradation)

N-type solar cell has no LID naturally which can increase power generation



Lower LCOE

Higher power output and lower BOS cost



Better Weak Illumination Response

Higher power output even under low-light environment



Better Temperature Coefficient

Higher power generation under normal working conditions



Enhanced Mechanical Load

Certified to withstand: wind load (2400 Pascal) and snow load (5400 Pascal).

Comprehensive and First-rate Certification System

IEC61215: 2016. IEC61730: 2016 Latest Standard ISO14001 and ISO45001, meeting the highest international standards Strict quality control



Electrical Characteristics

| Module | HT60-18X(ND)-F | | | | |
|---------------------------------|---------------------|--------|--------|--------|--------|
| Maximum Power at STC (Pmax) | 465W | 470W | 475W | 480W | 485W |
| Open - Circuit Voltage (Voc) | 42.3V | 42.4V | 42.5V | 42.6V | 42.7V |
| Short - Circuit Current (Isc) | 14.07A | 14.15A | 14.23A | 14.31A | 14.39A |
| Optimum Operating Voltage (Vmp) | 35.0V | 35.20V | 35.40V | 35.6V | 35.8V |
| Optimum Operating Current (Imp) | 13.30A | 13.37A | 13.43A | 13.50A | 13.56A |
| Module efficiency | 21.5% | 21.7% | 22.0% | 22.2% | 22.4% |
| Power Tolerance | 0 ~ + 5W | | | | |
| Maximum System Voltage | 1500V DC (UL / IEC) | | | | |
| Maximum Series Fuse Rating | 25A | | | | |
| Operating Temperature | -40 C to +85 C | | | | |

* STC: Irradiance 1000W/m², module temperature 25, AM=1.5
Optional black frame or white frame module according to customer requirements

NMOT

| Module | HT60-18X(ND)-F (Bifaciality 85±5%) | | | | |
|---------------------------------|------------------------------------|--------|--------|--------|--------|
| Maximum Power | 350W | 353W | 357W | 361W | 365W |
| Open - Circuit Voltage (Voc) | 40.10V | 40.25V | 40.41V | 40.57V | 40.73V |
| Short - Circuit Current (Isc) | 11.36A | 11.42A | 11.49A | 11.55A | 11.61A |
| Optimum Operating Voltage (Vmp) | 32.77V | 32.94V | 33.10V | 33.27V | 33.43V |
| Optimum Operating Current (Imp) | 10.67A | 10.73A | 10.79A | 10.85A | 10.92A |
| NMOT | 45±2 C | | | | |

* NMOT: Irradiance 800W/m², ambient temperature 20°C, wind speed 1m/s

Mechanical Characteristics

| | |
|-------------------------|---|
| Solar Cells | Monocrystalline 182 × 91mm |
| No. of Cells | 120(6 × 20) |
| Dimensions | 1909mm × 1134mm × 30mm |
| Weight | 26.0kg |
| Front Glass | High transmission tempered glass; thickness; 2.0mm |
| Frame | Anodized aluminium alloy |
| Junction Box | IP68 |
| Cable | 4mm ² (UL / IEC) length; (+)400mm, (-)200mm / length can be customized |
| Connectors | MC4/MC4 Compatible |
| Packaging Configuration | 36pcs / box, 864pcs / 40'HQ container |

Temperature Characteristics

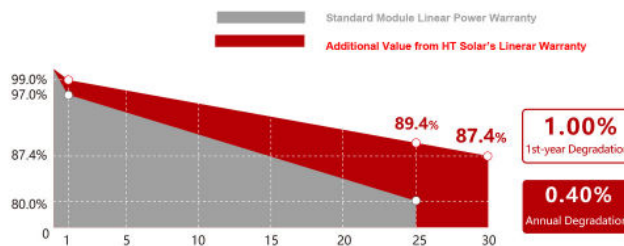
| | |
|---------------------------------|------------|
| Temperature Coefficient of Pmax | -0.29%/°C |
| Temperature Coefficient of Voc | -0.23%/°C |
| Temperature Coefficient of Isc | +0.046%/°C |

Warranty

12 - years
product warranty

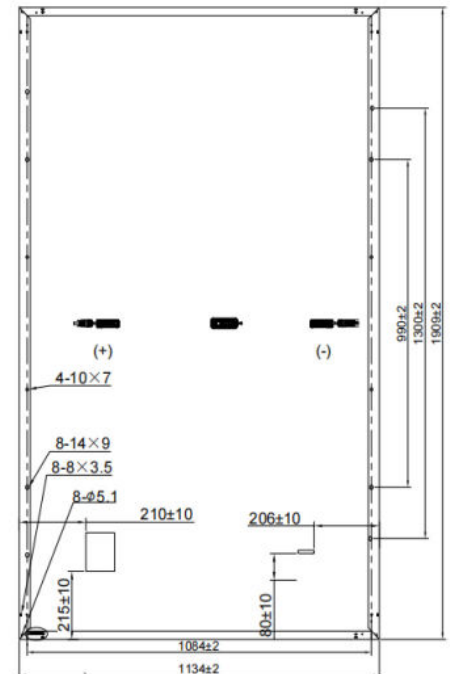
30 - years
warranty on power output

Specific information is referred to the product quality guarantee



The module recycling should be carried out by the professional institutions at the end of module life cycle

Engineering Drawing



IV Curves

