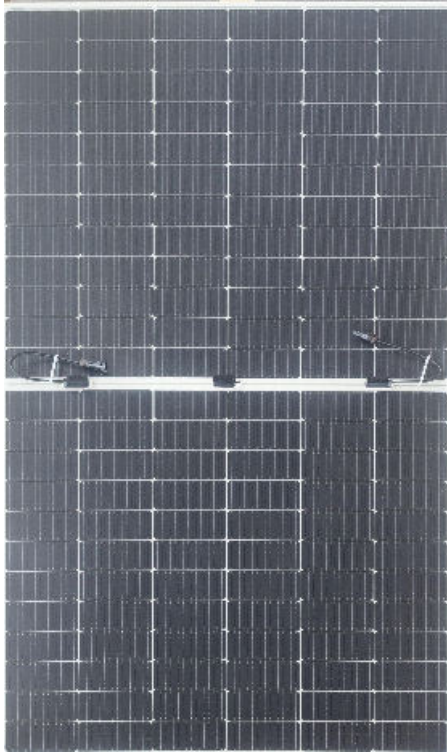


Jupiter Flex HT72-18X (NLm)

High Efficiency Low LID and TOPCon cell with Half-cut Technology
Big Size : Cell 182 × 91.875mm Monocrystalline

535W / 540W

545W / 550W / 555W



- Module Efficiency
21.4%
- No.of Cells
144(6 × 24)
- Weight
7.5±0.5kg
- Dimensions
2297 × 1131 × 3mm

Fast-Installation

Through faster installation, requires no penetration, reduces time on roof and saves installation costs.

Safety

Integration with underlying installation surface, ensuring the waterproof performance and safety performance of the roof.

Ultra-light

Glass free module weighs 7.5kg, 70% lighter than conventional glass modules.

Flexibility

The biggest advantage of flexible photovoltaic modules is that they can be bent and folded, which allows them to adapt to more application scenarios.

Comprehensive and First-rate Certification System

IEC61215: 2021. IEC61730: 2023. UL61730: 2017. IEC62804: 2015
ISO9001 ISO14001 and ISO45001



Jupiter Flex

Better Choice For Higher Efficiency



Electrical Characteristics

Module	HT72-18X (NLM)				
Maximum Power at STC (Pmax)	535W	540W	545W	550W	555W
Open - Circuit Voltage (Voc)	49.50V	49.70V	49.90V	50.10V	50.30V
Short - Circuit Current (Isc)	13.67A	13.75A	13.83A	13.91A	13.99A
Optimum Operating Voltage (Vmp)	41.30V	41.50V	41.70V	41.90V	42.10V
Optimum Operating Current (Imp)	12.96A	13.02A	13.07A	13.13A	13.19A
Module efficiency	20.6%	20.8%	21.0%	21.2%	21.4%
Power Tolerance	0 ~ + 5W				
Maximum System Voltage	1500V DC (UL / IEC)				
Maximum Series Fuse Rating	25A				
Operating Temperature	-40 C to +85 C				

* STC: Irradiance 1000W/m², module temperature 25, AM=1.5
Optional black frame or white frame module according to customer requirements

NMOT

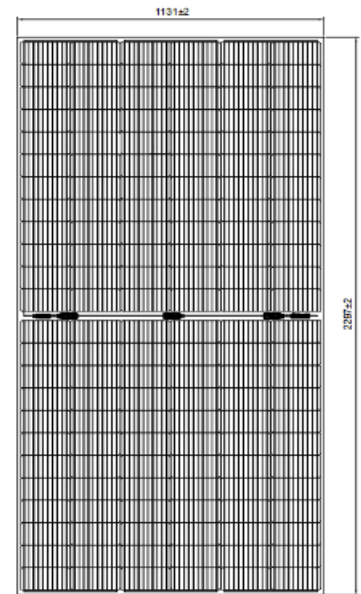
Module	HT72-18X (NLM)				
Maximum Power	394.6W	398.5W	402.0W	405.8W	409.4W
Open - Circuit Voltage (Voc)	46.58V	46.68V	46.77V	46.87V	46.96V
Short - Circuit Current (Isc)	11.11A	11.18A	11.27A	11.35A	11.43A
Optimum Operating Voltage (Vmp)	38.60V	38.70V	38.80V	38.90V	39.00V
Optimum Operating Current (Imp)	10.22A	10.30A	10.36A	10.43A	10.50A
NMOT	45±2 C				

* NMOT: Irradiance 800W/m², ambient temperature 20°C, wind speed 1m/s

Mechanical Characteristics

Solar Cells	Monocrystalline 182 × 91.875mm
No.of Cells	144(6 × 24)
Dimensions	2297 × 1131 × 3 mm
Weight	7.5±0.5kg
Frame	Framless
Junction Box	IP68
Cable	4mm ² (UL / IEC) length: (+)400mm, (-)200mm / customized length
Connectors	MC4-EVO2/MC4 Compatible
Packaging Configuration	58pcs/box, 1160pcs /40'HQ container

Engineering Drawing



Temperature Characteristics

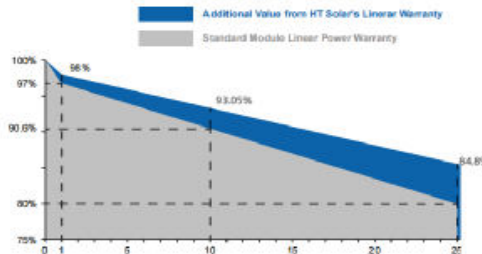
Temperature Coefficient of Pmax	-0.31%/°C
Temperature Coefficient of Voc	-0.25%/°C
Temperature Coefficient of Isc	+0.046%/°C

Warranty

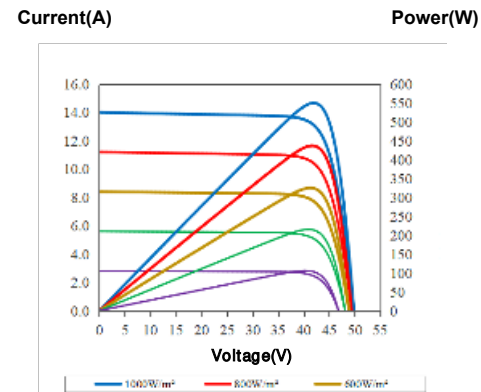
12 - years
product warranty

25 - years
warranty on power output

Specific information is referred to
the product quality guarantee



IV Curves



The module recycling should be carried out by the professional institutions at the end of module life cycle